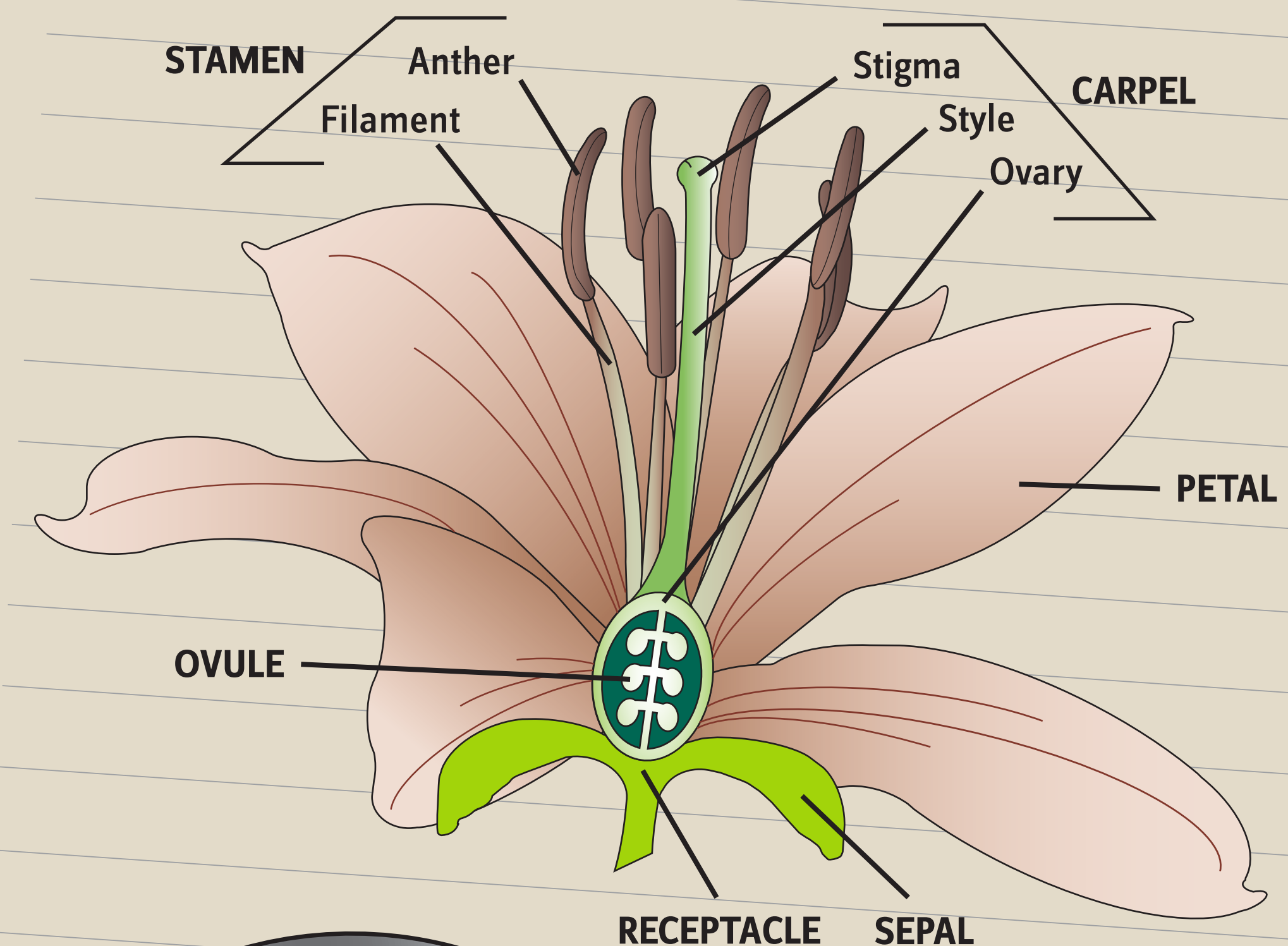


# What is pollination?

Pollination is an essential part of **plant reproduction**. Pollen from a flower's **anthers** (the male part of the plant) rubs or drops onto the pollinators. The pollinators then take this pollen to the next flower, where the pollen sticks to the **stigma** (the female part). The fertilized flower later yields fruit and seeds.



Do you know why  
some bees buzz?

Some plants like tomatoes and blueberries release their pollen through two tiny spores in each anther. Bees bite the anthers, hold tight, and buzz the pollen out of the flowers.

Bumblebees are living tuning forks, using a middle C tone to propel thousands of pollen grains from a flower in under a second.